

## Stainless steel lifting eye nut DIN 582

### Product information

Stainless steel lifting eye for vertical lifting.

[... Read more](#)



**Material:** AISI 316

**Marking:** According to standard, CE-marked

**Temperature range:** -40°C - (+)200°C

**Finish:** Polished

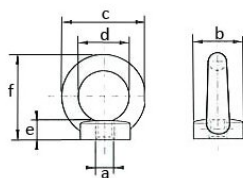
**Standard:** DIN 582

**Note:** Only for vertical lifting

**Warning:** Not to be heat-treated

**Safety factor:** 4:1

## Stainless steel lifting eye nut DIN 582

[Blueprint](#)


### Technical data

| Part code | WLL ton | Thread mm | b mm | c mm | d mm | e mm | f mm | Weight kg |
|-----------|---------|-----------|------|------|------|------|------|-----------|
| NSMH06L   | 0.08    | M6        | 20   | 36   | 20   | 8.5  | 36   | 0.05      |
| NSMH08L   | 0.14    | M8        | 20   | 36   | 20   | 8.5  | 36   | 0.05      |
| NSMH10L   | 0.23    | M10       | 25   | 45   | 25   | 10   | 45   | 0.09      |
| NSMH12L   | 0.34    | M12       | 30   | 54   | 30   | 11   | 53   | 0.16      |
| NSMH16L   | 0.7     | M16       | 35   | 63   | 35   | 13   | 62   | 0.24      |
| NSMH20L   | 1.2     | M20       | 39   | 71   | 39   | 14   | 70   | 0.36      |

### WORKING LOAD LIMITS

| Thread | WLL (t) | WLL (t) | WLL (t) | WLL (t) | WLL (t) | WLL (t) | WLL (t) | WLL (t) |
|--------|---------|---------|---------|---------|---------|---------|---------|---------|
|        |         |         |         |         | 0 - 45° | 45-60°  | 0 - 45° | 45-60°  |
| M6     | 0,08    |         | 0,16    |         | -       |         | -       |         |
| M8     | 0,14    |         | 0,28    |         | 0,1     |         | 0,14    |         |
| M10    | 0,23    |         | 0,46    |         |         |         |         |         |