

Weld-on lifting point, grade 80

Product information

Weld-on lifting point for all lifting directions. Equipped with a spring that holds the eye in desired position.

[... Read more](#)



Material: Steel

Marking: According to standard, CE-marked

Temperature range: -40°C - (+)200°C

Finish: Painted, yellow

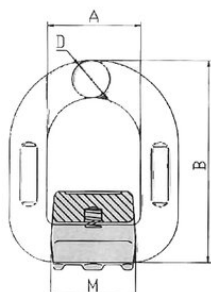
Standard: EN 1677-1

Safety factor: 4:1

Grade: 8

Weld-on lifting point, grade 80

Blueprint



Technical data

| Part code | WLL ton | A mm | B mm | D mm | M mm | Weight kg |
|-----------|---------|------|------|------|------|-----------|
| NS8HI1 | 1.12 | 41 | 78.5 | 13 | 37 | 0.4 |
| NS8HI2 | 2 | 42 | 88 | 14 | 40 | 0.47 |
| NS8HI3 | 3.15 | 45 | 94 | 17 | 42.5 | 0.69 |
| NS8HI5 | 5.3 | 55 | 118 | 22 | 50 | 1.46 |
| NS8HI8 | 8 | 70 | 141 | 26.5 | 66.5 | 2.5 |
| NS8HI15 | 15 | 97 | 188 | 34 | 90 | 5.79 |
| NS8HI20 | 20 | 149 | 240 | 46 | 125 | 15.37 |

WORKING LOAD LIMITS

| Product | WLL (t) | WLL (t) | WLL (t) | WLL (t) | WLL (t) | WLL (t) | WLL (t) | WLL (t) | WLL (t) |
|---------|---------|---------|---------|---------|---------|---------|---------|---------|---------|
| | | | | | 0 - 45° | 45-60° | 0 - 45° | 45-60° | |
| NS8HI1 | 1,12 | 1,12 | 2,24 | 2,24 | 1,57 | 1,12 | 2,35 | 1,68 | |
| NS8HI2 | 2 | 2 | 4 | 4 | 2,8 | 2 | 4,2 | 3 | |
| NS8HI3 | 3,15 | 3,15 | 6,3 | 6,3 | 4,41 | 3,15 | 6,62 | 4,73 | |
| NS8HI5 | 5,3 | 5,3 | 10,6 | 10,6 | 7,42 | 5,3 | 11,13 | 7,95 | |
| NS8HI8 | 8 | 8 | 16 | 16 | 11,2 | 8 | 16,8 | 12 | |
| NS8HI15 | 15 | 15 | 30 | 30 | 21 | 15 | 31,5 | 22,5 | |